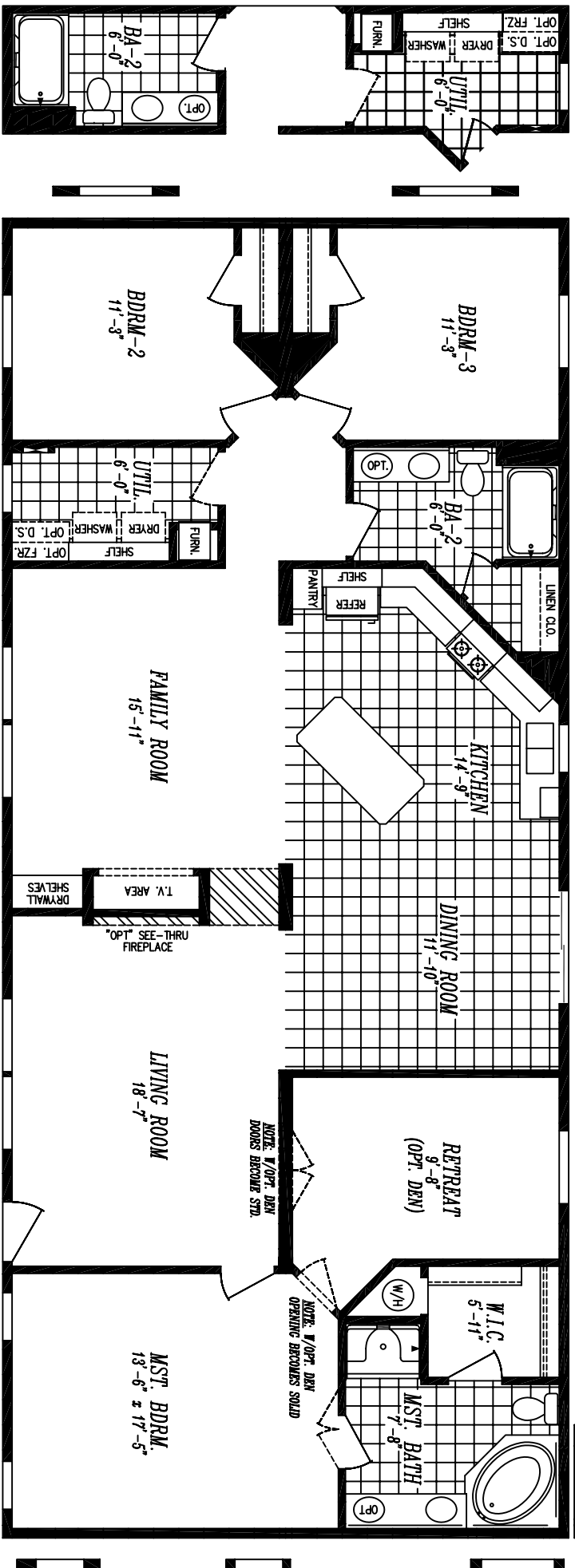


FIRST EDITION 7030-9750  
 30'-0" x 70'-0"  
 APPROX. 2,100 SQ. FT.



OPT. FLIPPED BATH  
 AND UTILITY

OPT. UTIL. DOOR IPO WINDOW

OPT. (3) WINDOWS

T.V. AREA  
 DRYWALL SHELVES

OPT. SEE-THRU  
 FIREPLACE

OPT. REC. ENTRY

